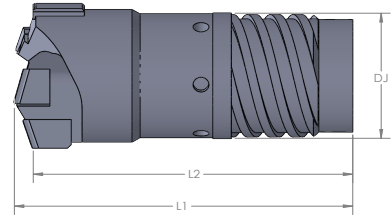
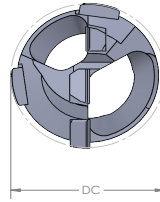


DTS (Ejector) Brazed, Ground Drill Head: EJ424.6

Diameter Range:

18.39 - 65.00 MM

.724-2.559 INCH



Diameter range, inch	Tube range	Ordering code, Drill head	P	M	K	N	S					
			EJ base carbide grade (Gzz)						dm _m	l ₁	l ₂	
			63	52	63	24	24	63				24
.724 - .756	00	EJ424.6-001 Dx.xxx Gzz	★	✓	★	★	★	★	✓	0.63	1.969	1.854
.757 - .786		002 Dx.xxx Gzz	★	✓	★	★	★	★	✓	0.63	1.969	1.85
.787 - .822	01	EJ424.6-011 Dx.xxx Gzz	★	✓	★	★	★	★	✓	0.709	2.205	2.083
.823 - .858		012 Dx.xxx Gzz	★	✓	★	★	★	★	✓	0.709	2.205	2.075
.859 - .902	02	EJ424.6-021 Dx.xxx Gzz	★	✓	★	★	★	★	✓	0.768	2.205	2.079
.903 - .949		022 Dx.xxx Gzz	★	✓	★	★	★	★	✓	0.768	2.205	2.071
.950 - .992	03	EJ424.6-031 Dx.xxx Gzz	★	✓	★	★	★	★	✓	0.827	2.264	2.126
.993 - 1.039		032 Dx.xxx Gzz	★	✓	★	★	★	★	✓	0.827	2.264	2.126
1.040 - 1.083	04	EJ424.6-041 Dx.xxx Gzz	★	✓	★	★	★	★	✓	0.925	2.382	2.236
1.084 - 1.130		042 Dx.xxx Gzz	★	✓	★	★	★	★	✓	0.925	2.382	2.236
1.131 - 1.173	05	EJ424.6-051 Dx.xxx Gzz	★	✓	★	★	★	★	✓	1.004	2.5	2.343
1.174 - 1.220		052 Dx.xxx Gzz	★	✓	★	★	★	★	✓	1.004	2.5	2.335
1.221 - 1.263	06	EJ424.6-061 Dx.xxx Gzz	★	✓	★	★	★	★	✓	1.102	2.5	2.339
1.264 - 1.311		062 Dx.xxx Gzz	★	✓	★	★	★	★	✓	1.102	2.5	2.327
1.312 - 1.370	07	EJ424.6-071 Dx.xxx Gzz	★	✓	★	★	★	★	✓	1.181	2.776	2.598
1.371 - 1.425		072 Dx.xxx Gzz	★	✓	★	★	★	★	✓	1.181	2.776	2.594
1.426 - 1.469	08	EJ424.6-081 Dx.xxx Gzz	★	✓	★	★	★	★	✓	1.299	2.894	2.705
1.470 - 1.512		082 Dx.xxx Gzz	★	✓	★	★	★	★	✓	1.299	2.894	2.697
1.513 - 1.559		083 Dx.xxx Gzz	★	✓	★	★	★	★	✓	1.299	2.894	2.689
1.560 - 1.598	09	EJ424.6-091 Dx.xxx Gzz	★	✓	★	★	★	★	✓	1.417	2.894	2.705
1.599 - 1.646		092 Dx.xxx Gzz	★	✓	★	★	★	★	✓	1.417	2.894	2.697
1.647 - 1.693		093 Dx.xxx Gzz	★	✓	★	★	★	★	✓	1.417	2.894	2.689
1.694 - 1.744	10	EJ424.6-101 Dx.xxx Gzz	★	✓	★	★	★	★	✓	1.535	2.953	2.736
1.745 - 1.795		102 Dx.xxx Gzz	★	✓	★	★	★	★	✓	1.535	2.953	2.728
1.796 - 1.850		103 Dx.xxx Gzz	★	✓	★	★	★	★	✓	1.535	2.953	2.72
1.851 - 1.909	11	EJ424.6-111 Dx.xxx Gzz	★	✓	★	★	★	★	✓	1.693	3.11	2.866
1.910 - 1.972		112 Dx.xxx Gzz	★	✓	★	★	★	★	✓	1.693	3.11	2.862
1.973 - 2.035		113 Dx.xxx Gzz	★	✓	★	★	★	★	✓	1.693	3.11	2.854
2.036 - 2.095	12	EJ424.6-121 Dx.xxx Gzz	★	✓	★	★	★	★	✓	1.85	3.229	2.961
2.096 - 2.154		122 Dx.xxx Gzz	★	✓	★	★	★	★	✓	1.85	3.229	2.972
2.155 - 2.213		123 Dx.xxx Gzz	★	✓	★	★	★	★	✓	1.85	3.229	2.961
2.214 - 2.299	13	EJ424.6-131 Dx.xxx Gzz	★	✓	★	★	★	★	✓	2.008	3.307	3.039
2.300 - 2.386		132 Dx.xxx Gzz	★	✓	★	★	★	★	✓	2.008	3.307	3.016
2.387 - 2.472		133 Dx.xxx Gzz	★	✓	★	★	★	★	✓	2.008	3.307	3.024
2.473" - 2.559"		134 Dx.xxx Gzz	★	✓	★	★	★	★	✓	2.008	3.307	3.012

★ = First choice grade
 ✓ = Second choice grade

1. Drills with other grade combinations are available upon request.
2. When ordering drill heads, state drill diameter (x.xxx) and grade combination (zz) in the ordering code.
Ordering example: EJ424.6-032 D1.000 G63
3. Coated drills will have 4 digits in the grade/coating code.