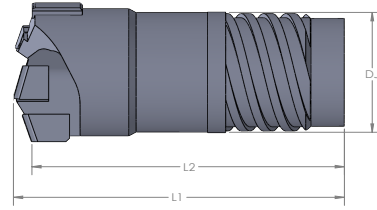
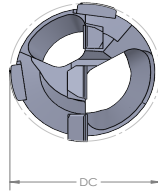


STS Brazed, Ground Drill Head: EJ420.6

Diameter Range:

12.60 - 65.00 MM

.496 - 2.559 INCH



Diameter range, inch	Tube range	Ordering code, Drill head	P M K N S								dm _m	l ₁	l ₂
			EJ base carbide grade (Gzz)										
			63	52	63	24	24	63	24				
.496 - .515	94	EJ420.6-941 Dx.xxx Gzz	★	✓	★	★	★	★	★	✓	0.323	1.693	1.65
.516 - .535		942 Dx.xxx Gzz	★	✓	★	★	★	★	★	✓	0.323	1.693	1.65
.536 - .555	95	EJ420.6-951 Dx.xxx Gzz	★	✓	★	★	★	★	★	✓	0.362	1.693	1.646
.556 - .575		952 Dx.xxx Gzz	★	✓	★	★	★	★	★	✓	0.362	1.693	1.646
.576 - .594	96	EJ420.6-961 Dx.xxx Gzz	★	✓	★	★	★	★	★	✓	0.402	1.693	1.642
.595 - .614		962 Dx.xxx Gzz	★	✓	★	★	★	★	★	✓	0.402	1.693	1.642
.615 - .637	97	EJ420.6-971 Dx.xxx Gzz	★	✓	★	★	★	★	★	✓	0.496	1.693	1.587
.638 - .657		972 Dx.xxx Gzz	★	✓	★	★	★	★	★	✓	0.496	1.693	1.587
.658 - .677	98	EJ420.6-981 Dx.xxx Gzz	★	✓	★	★	★	★	★	✓	0.535	1.693	1.587
.678 - .696		982 Dx.xxx Gzz	★	✓	★	★	★	★	★	✓	0.535	1.693	1.587
.697 - .724	99	EJ420.6-991 Dx.xxx Gzz	★	✓	★	★	★	★	★	✓	0.571	1.85	1.74
.725 - .744		992 Dx.xxx Gzz	★	✓	★	★	★	★	★	✓	0.571	1.85	1.736
.745 - .755	0	EJ420.6-001 Dx.xxx Gzz	★	✓	★	★	★	★	★	✓	0.61	1.85	1.736
.756 - .787		002 Dx.xxx Gzz	★	✓	★	★	★	★	★	✓	0.61	1.85	1.732
.788 - .822	1	EJ420.6-011 Dx.xxx Gzz	★	✓	★	★	★	★	★	✓	0.63	2.069	1.945
.823 - .858		012 Dx.xxx Gzz	★	✓	★	★	★	★	★	✓	0.63	2.069	1.937
.859 - .901	2	EJ420.6-021 Dx.xxx Gzz	★	✓	★	★	★	★	★	✓	0.709	2.205	2.079
.902 - .948		022 Dx.xxx Gzz	★	✓	★	★	★	★	★	✓	0.709	2.205	2.071
.949 - .992	3	EJ420.6-031 Dx.xxx Gzz	★	✓	★	★	★	★	★	✓	0.768	2.264	2.126
.993 - 1.039		032 Dx.xxx Gzz	★	✓	★	★	★	★	★	✓	0.768	2.264	2.126
1.040 - 1.082	4	EJ420.6-041 Dx.xxx Gzz	★	✓	★	★	★	★	★	✓	0.826	2.264	2.118
1.083 - 1.129		042 Dx.xxx Gzz	★	✓	★	★	★	★	★	✓	0.826	2.264	2.118
1.130 - 1.173	5	EJ420.6-051 Dx.xxx Gzz	★	✓	★	★	★	★	★	✓	0.925	2.5	2.343
1.174 - 1.220		052 Dx.xxx Gzz	★	✓	★	★	★	★	★	✓	0.925	2.5	2.335
1.221 - 1.263	6	EJ420.6-061 Dx.xxx Gzz	★	✓	★	★	★	★	★	✓	1.004	2.5	2.339
1.264 - 1.311		062 Dx.xxx Gzz	★	✓	★	★	★	★	★	✓	1.004	2.5	2.327
1.312 - 1.370	7	EJ420.6-071 Dx.xxx Gzz	★	✓	★	★	★	★	★	✓	1.102	2.5	2.313
1.371 - 1.425		072 Dx.xxx Gzz	★	✓	★	★	★	★	★	✓	1.102	2.5	2.319
1.426 - 1.468	8	EJ420.6-081 Dx.xxx Gzz	★	✓	★	★	★	★	★	✓	1.181	2.894	2.705
1.469 - 1.511		082 Dx.xxx Gzz	★	✓	★	★	★	★	★	✓	1.181	2.894	2.697
1.512 - 1.559		083 Dx.xxx Gzz	★	✓	★	★	★	★	★	✓	1.181	2.894	2.689
1.560 - 1.598	9	EJ420.6-091 Dx.xxx Gzz	★	✓	★	★	★	★	★	✓	1.299	2.894	2.685
1.599 - 1.645		092 Dx.xxx Gzz	★	✓	★	★	★	★	★	✓	1.299	2.894	2.677
1.646 - 1.692		093 Dx.xxx Gzz	★	✓	★	★	★	★	★	✓	1.299	2.894	2.669
1.693 - 1.744	10	EJ420.6-101 Dx.xxx Gzz	★	✓	★	★	★	★	★	✓	1.299	2.953	2.736
1.745 - 1.795		102 Dx.xxx Gzz	★	✓	★	★	★	★	★	✓	1.299	2.953	2.728
1.796 - 1.850		103 Dx.xxx Gzz	★	✓	★	★	★	★	★	✓	1.299	2.953	2.72
1.851 - 1.909	11	EJ420.6-111 Dx.xxx Gzz	★	✓	★	★	★	★	★	✓	1.535	2.953	2.709
1.910 - 1.972		112 Dx.xxx Gzz	★	✓	★	★	★	★	★	✓	1.535	2.953	2.705
1.973 - 2.035		113 Dx.xxx Gzz	★	✓	★	★	★	★	★	✓	1.535	2.953	2.697
2.036 - 2.094	12	EJ420.6-121 Dx.xxx Gzz	★	✓	★	★	★	★	★	✓	1.693	3.228	2.961
2.095 - 2.153		122 Dx.xxx Gzz	★	✓	★	★	★	★	★	✓	1.693	3.228	2.972
2.154 - 2.212		123 Dx.xxx Gzz	★	✓	★	★	★	★	★	✓	1.693	3.228	2.961
2.213 - 2.299	13	EJ420.6-131 Dx.xxx Gzz	★	✓	★	★	★	★	★	✓	1.85	3.307	3.039
2.300 - 2.385		132 Dx.xxx Gzz	★	✓	★	★	★	★	★	✓	1.85	3.307	3.02
2.386 - 2.472		133 Dx.xxx Gzz	★	✓	★	★	★	★	★	✓	1.85	3.307	3.024
2.473 - 2.559		134 Dx.xxx Gzz	★	✓	★	★	★	★	★	✓	1.85	3.307	3.012

★ = First choice grade
 ✓ = Second choice grade

1. Drills with other grade combinations are available upon request.
2. When ordering drill heads, state drill diameter (x.xxx) and grade combination (zz) in the ordering code.
Ordering example: EJ424.6-032 D1.000 G63
3. Coated drills will have 4 digits in the grade/coating code.